

CELO

If you're going to save time,
save time.



Smart Clamps for the Smart Ones

Increase your productivity
with smart, easy and effective solutions.

Smart Fixings System

Twist & Click



The Smart Fixings System is the system to fix pipes and conduits. Designed by CELO this unique system is made of high technical nylon.

Lock the Smart Clamp by hand **in a snap**



Nail & Click



Screw & Click



Main advantages:

- **Reduced labour cost**
- **Thermal and electrical resistance**
- **Non-magnetic**
- **Chemical resistance**
- **Halogen-free & phosphate-free**
- **Rust and Corrosion resistant**

Compatible with all types of pipes and conduits:

EMT, IMC, RMC, PVC, CPVC, PPR, PEX, COPPER, Flex, Flex conduit, Aluminum conduit.

Application Sectors

Commercial



Marine



Swimming Pools



Low Voltage



Residential



Fish Farms



Wet Rooms



Livestock Farms



Chemical Industry



Clean Rooms



Farming



Hospitals



LISTED

UL 2239

IAPMO PS 42

UL 2043 Plenum rated



PIPE ALIGNMENT AND
SECONDARY SUPPORTS SYTEM

SA45153

Technical data:

- Made of PA6 High Technical Nylon
- RoHS approved
- Grey color RAL 7035
- Temperature resistance:
 - Installation +23 °F/ 113°F
 - Maintaining 14 °F/ 194 °F
 - Peak -13 °F/ 230 °F
- Max. load 298 lbs

SSC Smart Strut Clamp



Twist & Click



"direct strut installation"

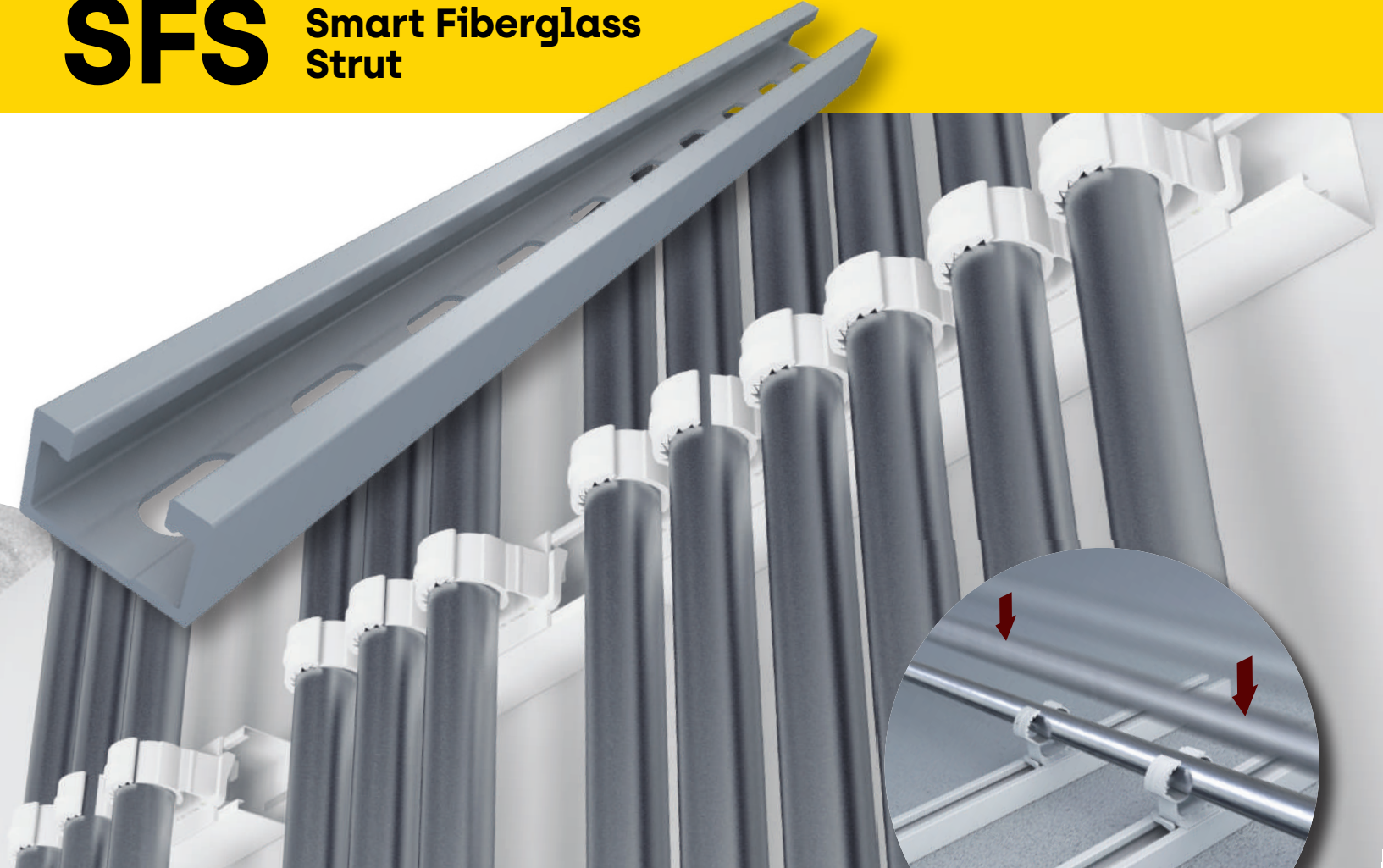
**All-in-one clamp
No accessories and tools needed**



Plenum rated

SSC must be installed using at least 14 gauge metal strut channels.

SFS Smart Fiberglass Strut



The Smart Fiberglass is the unique non-metallic strut made of high technical fiberglass for an easy and fast installation.



- **63% lighter than steel.**
- **Easy cutting and handling on site.**
- **Electrical and Thermal resistance.**
- **Rust and corrosion resistant.**
- **Same strength as a steel rail (L<22 in) (L<550 mm).**

SSC clamp is designed to work perfectly in our fiberglass strut.

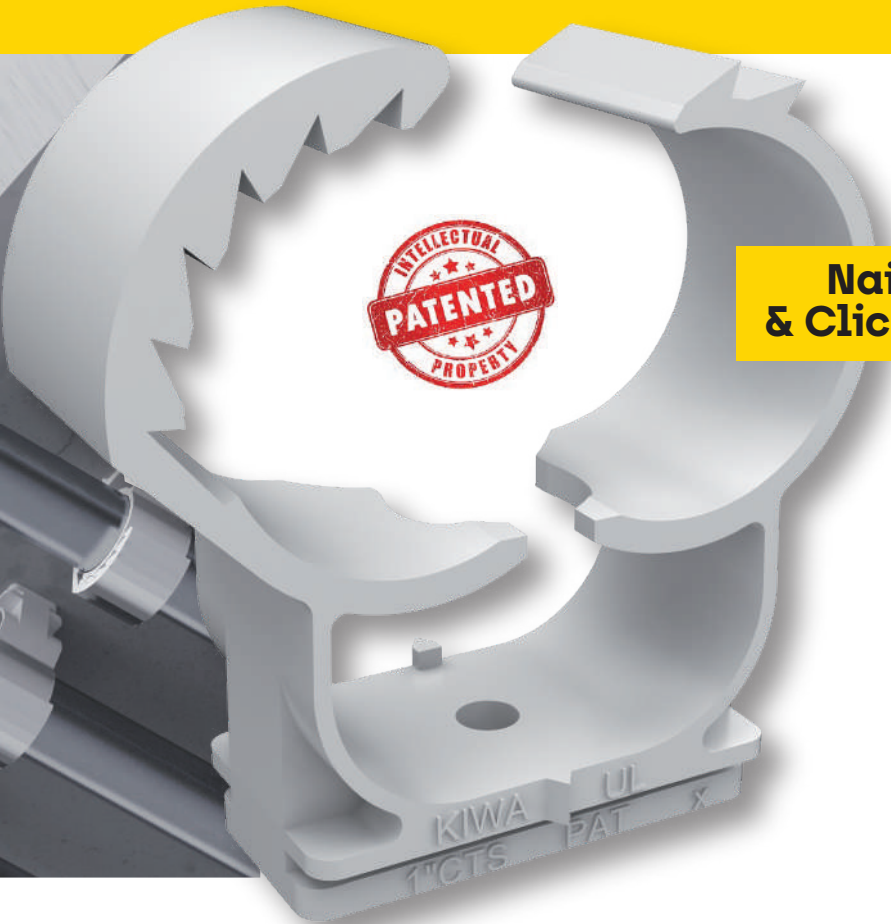
Technical data:

- Temperature resistance
14 °F/ 140 °F.

Temperature:	Load:
+ 75 °F	211 lb
+122 °F	170 lb

* Max. working load for span 22".

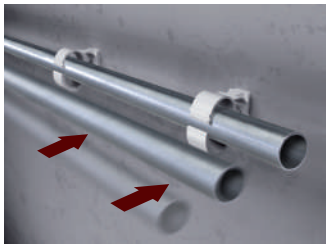
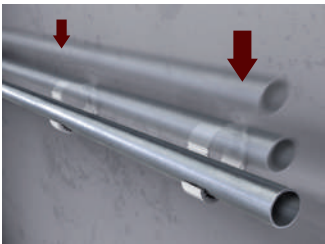
ABT Smart Nail Clamp



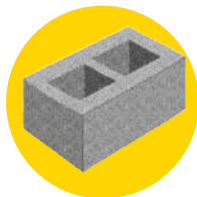
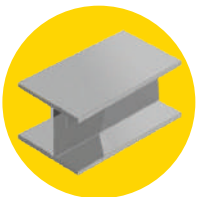
Nail & Click



UL US
LISTED
 CONDUIT AND CABLE
 HARDWARE
 E480214
Plenum rated



CLASSIFIED
UL
 PIPE ALIGNMENT AND
 SECONDARY SUPPORTS SYSTEM
 SA45153



Use CELO's Force One nailer for fast and efficient installations on concrete or steel beams.

FORCE ONE Nailer

The Kit includes:

1 charger, 2 batteries (3000 shots each). Force One glasses, earplugs, manual and case.

Technical data:

- High power (105J).
- Fires nails and clips into steel, concrete and concrete blocks.
- Length range 1/2" to 1-1/2".

Advantages:

- Lightest and most compact tool in its class.
- Better balance, more ergonomic, less operator fatigue.
- Lightweight (8 lbs).
- Highly effective dust protection due to the new mesh suction filter.
- Clean and quiet: ideal for confined spaces.



Ultra Light Trigger



Ergonomic Design



Easy Drive Depth Adjustment



Up To 0.5" Steel Thickness



Slim Nose



Easy Jam Clearance Design

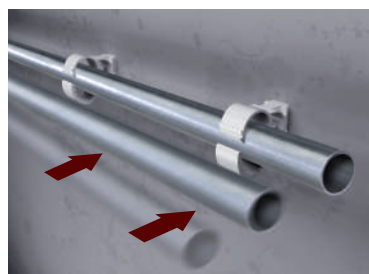
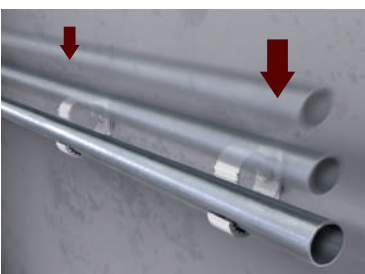


STC Smart Tap Clamp



"concrete screw installation"

The multipurpose Smart Tap Clamp is quickly installed with an anchor screw diameter 1/4" (drill bit 3/16"), or drywall screw.



UL
LISTED
CONDUIT AND CABLE
HARDWARE
E480214

Plenum rated





SSC Smart Strut Clamp

SSC Code	Pipe type									Box units
	mm	EMT	IMC	RMC	PVC	Aluminum	Copper	CPVC	PP-R	
918SSC	14-18	1/2"					1/2" & 5/8"	1/2"		50
925SSC	20-25	3/4"	1/2"	1/2"	1/2"	1/2"	3/4"	3/4"	1/2"	25
932SSC	25-32	1"	3/4" & 1"	3/4"	3/4"	3/4"	1"	1"	3/4"	25
942SSC	35-42	1-1/4"	1-1/4"	1" & 1-1/4"	1" & 1-1/4"	1" & 1-1/4"	1-1/4" & 1-1/2"	1-1/4" & 1-1/2"	1" & 1-1/4"	20
955SSC	48-55	1-1/2" & 2"	1-1/2"	1-1/2"	1-1/2"	1-1/2"	2"	2"	1-1/2"	10
965SSC	59-65		2"	2"	2"	2"			2"	8



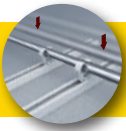
ABT Smart Nail Clamp

ABT Code	Pipe type									Box units
	mm	EMT	IMC	RMC	PVC	Aluminum	Copper	CPVC	PP-R	
918ABT	14-18	1/2"					1/2" & 5/8"	1/2"		100
925ABT	20-25	3/4"	1/2"	1/2"	1/2"	1/2"	3/4"	3/4"	1/2"	50
932ABT	25-32	1"	3/4" & 1"	3/4"	3/4"	3/4"	1"	1"	3/4"	50
942ABT	35-42	1-1/4"	1-1/4"	1" & 1-1/4"	1" & 1-1/4"	1" & 1-1/4"	1-1/4" & 1-1/2"	1-1/4" & 1-1/2"	1" & 1-1/4"	50



STC Smart Tap Clamp

STC Code	Pipe type									Box units
	mm	EMT	IMC	RMC	PVC	Aluminum	Copper	CPVC	PP-R	
918STC	14-18	1/2"					1/2" & 5/8"	1/2"		100
925STC	20-25	3/4"	1/2"	1/2"	1/2"	1/2"	3/4"	3/4"	1/2"	50
932STC	25-32	1"	3/4" & 1"	3/4"	3/4"	3/4"	1"	1"	3/4"	50
942STC	35-42	1-1/4"	1-1/4"	1" & 1-1/4"	1" & 1-1/4"	1" & 1-1/4"	1-1/4" & 1-1/2"	1-1/4" & 1-1/2"	1" & 1-1/4"	25
955STC	48-55	1-1/2" & 2"	1-1/2"	1-1/2"	1-1/2"	1-1/2"	2"	2"	1-1/2"	20
965STC	59-65		2"	2"	2"	2"			2"	15



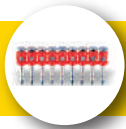
SFS Smart Fiberglass Strut

SFS Code	mm	in	ft	Bundle
4125SF05	500	20	1,7	32
4125SF09	900	36	3	32
4125SF18	1800	72	6	18
4125SF30	3000	118	10	12



FORCE ONE Tool

Code		Box units
FONE20US	FORCE ONE nail gun, short track 20 nails, US plug.	1



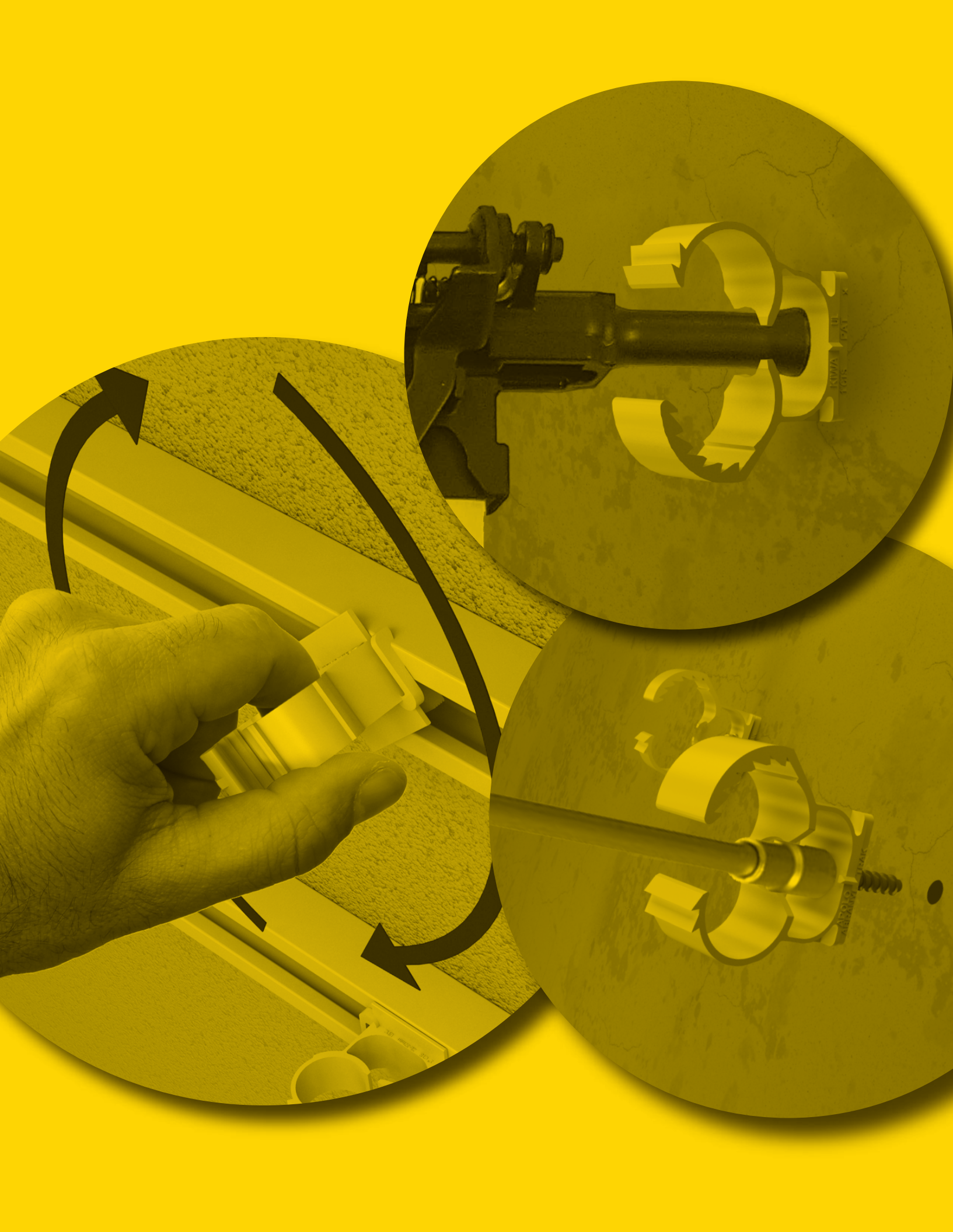
XHA Nails

Code		Box units	Units Bundle
913800XHA	1/2 inch Premium XHA nails	800	4,000
917800XHA	11/16 inch Premium XHA nails	800	4,000
922800XHA	7/8 inch Premium XHA nails	800	4,000
927800XHA	1-1/8 inch Premium XHA nails	800	4,000
932800XHA	1-1/4 inch Premium XHA nails	800	4,000
938800XHA	1-1/2 inch Premium XHA nails	800	4,000



Fuel cell

Code		Box units
9GASFONE	FORCE ONE Fuel cell for nailer	1



CELO

Small Things Matter

Get
FREE
Trial Kit



CELO Fixings USA INC.
2727 Ponce de León Blvd.
Coral Gables FL 3314

M +1 786 451 6106

www.celofixings.us

All technical information is described in CELO's website including applications and installation instructions. The owner of the product is responsible to read, understand and acknowledge the use and maintenance as indicated by CELO. The individual user remains responsible for the correct use of the product. All usages not described by CELO are at one's own risk and responsibility. CELO will accept no responsibility or liability in respect of misuse or improper use of the product.